

KENT ARCHAEOLOGICAL SOCIETY

NEWSLETTER



No. 12

Autumn 1987

ARCHAEOLOGY AND LOCAL HISTORY AT WORK 87

10.30 am to 5.00 pm Saturday, 24th October, 1987 at Plaxtol County Primary School, School Lane, Plaxtol, Kent.

An All-Day Event

by Ted Connell

Once again we are holding an archaeology and local history workshop during the Autumn and all K.A.S. members and their friends are cordially invited.

As in previous years, there will be a series of static exhibitions, practical demonstrations and study sessions on a number of subjects related to archaeology and local history.

The main emphasis this year will be on the Plaxtol area of West Kent and the meeting is a joint venture between the K.A.S. and Plaxtol Local History Society. Amongst other things, there will be an opportunity to learn more about the recent excavation of the Roman Villa at Sedgebrook, to visit Plaxtol Parish Church and to see the exterior of many houses

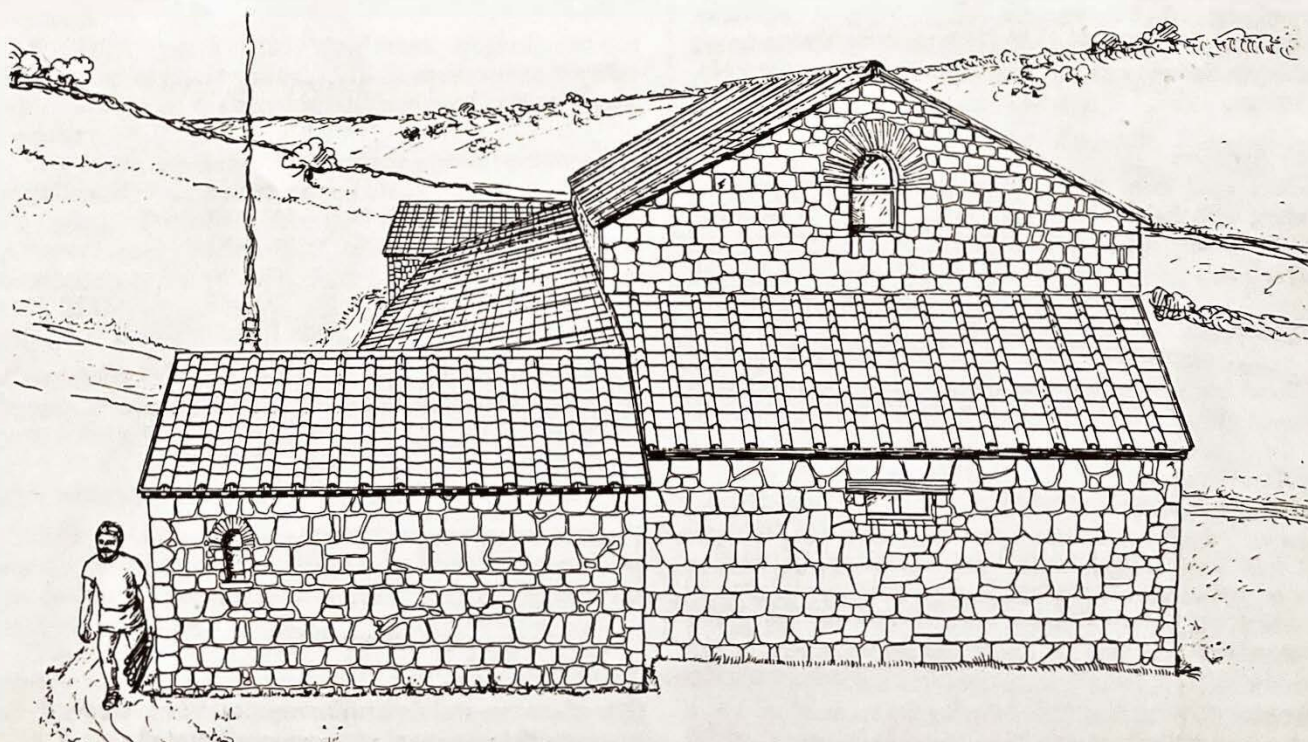
of historical and architectural interest within the village of Plaxtol.

Roman Villa

Throughout this Spring and Summer, work has continued for a second year on this newly discovered site. Excavations have revealed more of the history of the building throughout the Roman period. Many of the finds, together with drawings, plans and photographs will be on display and it is hoped that all the visitors will take the opportunity to visit the site.

Village Trail

There will be an exhibition of the recording work done by
(Continued over)



A drawing by Guy de la Bédoyère showing a possible reconstruction of the Sedgebrook Villa at Plaxtol.

(Continued from the front page)

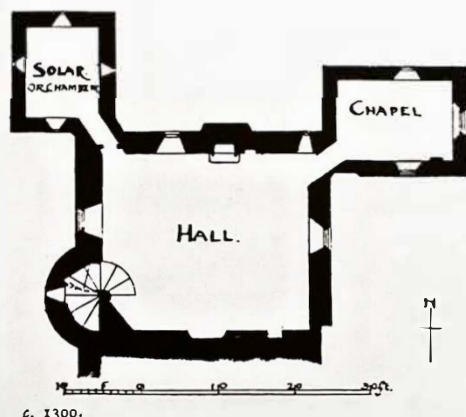
the Plaxtol Local History Society on some of the Medieval and later buildings in the Village. Having seen the exhibition, you may then follow a village trail viewing the exterior of some of these houses.

The Church and Churchyard Survey

Whilst following the village trail you can visit Plaxtol Church built in 1648, where members of the Local History Society will be on hand to explain their work of recording the church, which lacks a dedication, the churchyard and its monuments. The Church underwent several Victorian additions and enlargements but the main roof and hammer beams remain as 17th century survivors.

Old Soar Manor

This Medieval manor house, a National Trust property, in the guardianship of English Heritage, will also be open to visitors and information about its history will be available beforehand at the workshop. Old Soar, largely built in Kentish ragstone, dates from c.1290 which in spite of some spoiling is a remarkable example of a knightly home from the reign of Edward I and a most notable survival of 13th century domestic architecture.



c. 1300.

FIG. 60.—The first-floor plan of OLD SOAR.

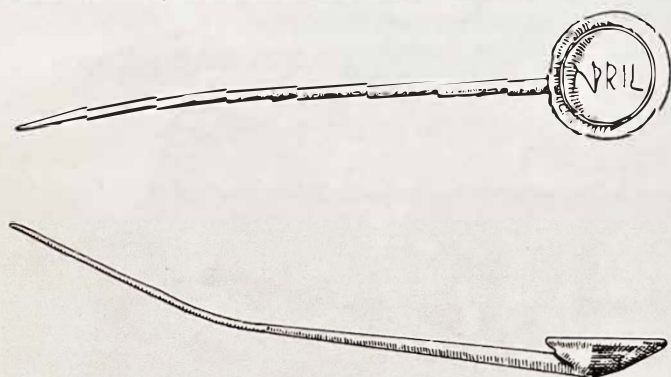
(From Turner's *Domestic Architecture*.)

Farm Buildings Survey

There will be a display and video of the farm buildings survey carried out for the Kent Historic Buildings Committee in 1979 and 1980. This work by Mollie Lewis and Jayne Semple was fully written up in this *Newsletter* No. 4 Autumn 1983.

Kent Archives

Some staff from the Kent Archives will be present, bringing with them various documents relating to the area, which normally are so difficult to see or consult.



2/3 actual size

Sedgebrook Roman Villa at Plaxtol

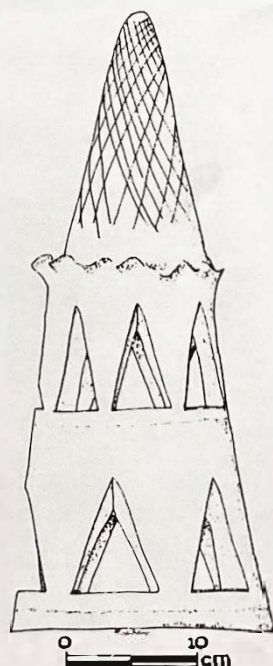
A Roman silver spoon, found during the excavation, with the letters APRIL scratched crudely on the bowl, April being a man's name. Drawn by Guy de la Bédoyère.



PLAXTOL CHURCH: WEST TOWER. 1880.

Plaxtol's seventeenth-century Parish Church of unknown dedication.

We hope that some or all of the above topics will be of interest to you and we look forward to meeting you on Saturday 24th October at any time between 10.30 am and 5.00 pm. Tea and coffee will be available all day. There are several noted restaurants in the locality which figure in some gastronomic guide books. However, pub lunches can be obtained locally or you are welcome to eat your sandwiches with us. Admission is free, and no tickets will be necessary.



One of the two finials or chimney pots discovered amongst the mass of the fragments of roof tile.

Drawn by Guy de la Bédoyère.

NEW BOOKS

SUMMARY OF CONTENTS

The Roman Villa at Lullingstone, Kent. Vol. II: The Wall Paintings and Finds, G.W. Meates

10.5 x 8.5 cm. Pp. 330, 91 figs., 7 pls. + 18 colour pls., dust-jacket in full colour, cased.

Price (members £25.00 + £2 p&p; (non-members) £35.00 + £2 p&p. Special Offer: Vols I and II together (members) £30.00 + £3 p&p; (non-members) £45.00 + £3 p&p.

Available August 1987. Orders with remittance payable to K.A.S., to Dr. A.P. Detsicas, Dunelm House, Main Road, Icklesham, Winchelsea, East Sussex TN36 4AR.

Canterbury Excavations Intra- and Extra-Mural Sites 1949-55 and 1980-84 by S.S. Frere, P. Bennett, J. Rady and S. Stow. Vol 8 in the Archaeology of Canterbury series.

This monograph includes accounts of excavations by the Canterbury Committee between 1949 and 1955, and the Canterbury Archaeological Trust between 1980 and 1984.

This report includes full publication of the important Whitehall Road site which produced Neolithic, Late Iron Age and Early Roman occupation west of the Stour and outside the area later contained by the city defences. A Roman cemetery under Lady Wootton's Green, east of the city wall, complex occupation levels against Roman Watling Street near the Dane John Gardens and excavations in the area of the Roman Forum at the centre of the city are also included in this volume.

The C.A.T. reports include work on the 800-year-old cathedral water supply, St. Sepulchre's Nunnery and a large Roman cremation cemetery at Cranmer House, London Road, which produced 50 Roman cremation burials together with a small group of late 6th to early 7th century finds. Anglo-Saxon finds include the beautiful gold pendant, published in the volume in full colour: "one of the most complex and splendid pieces of Anglo-Saxon jewellery to have been found since the discovery of the Sutton Hoo burial". Other accounts include work on the Roman Forum, medieval All Saints Church and the King's Bridge and the motte-and-bailey construction of William I in the Dane John Gardens.

Specialist reports include the Roman, Anglo-Saxon and Post-medieval glass from the 1946-60 excavations, together with a section on the grave goods from the Cranmer House cemetery.

22 x 28 cm., pp. 338, 124 figures, 36 plates, 1 colour plate, cloth-bound + dust-jacket in full colour, cased, £27.00 (+ £2 p&p). Published for the C.A.T. by the Kent Archaeological Society and obtainable from all good booksellers or from C.A.T., 92A Broad Street, Canterbury CT1 2LU.

Canterbury In Domesday Book by T. Tatton-Brown. No. 1 in the Canterbury Heritage Series, published by the C.A.T. with a full colour front cover.

21 x 14.8 cm, 20 illustrations, 3 maps. Paperback, £2.50 plus postage & packing.

This timely book, which is the first in a projected series of eight, represents super value both in terms of its contents and the quality of its production and printing quality, in common with all other C.A.T. work.

C.A.T. have also produced a series of eight full colour postcards which are available from the Trust at 10p each. If all members were to obtain a set for their correspondence the C.A.T. would greatly benefit and their correspondents would surely appreciate receiving them.

KENT CERAMICS STUDY GROUP

Fourth Roman Pottery Workshop

Following on from our third Roman Pottery meeting in Dartford, a further workshop has been arranged for Saturday 7th November, 1987.

By kind invitation of the Curator, Dr Alan Tyler, the meeting will take place in the Bromley Borough Museum, The Priory, Church Hill, off High Street, Orpington from 11.00 am to 4.00 pm.

This year our meeting will have a slightly different emphasis. Instead of looking at pottery excavated from sites all over the County, we shall be studying the pottery from one particular site. We shall be looking at and talking about the extensive Poverest Road (Orpington) collection. This is an exceptionally important group of late Roman Pottery, including many mortaria fragments (of which 150 have been listed so far) and over 40 different forms of Oxfordshire Ware (C. Young series).

The programme for the day will be as follows:

11.00 - 12.30 Viewing, handling, and informal discussion on a selection of the great variety of forms and fabrics.

12.30 - 2.00 Break for lunch

2.00 - 3.00 Christopher St. John Breen will give an illustrated talk about the collection.

3.00 - 4.00 Tea and further informal discussion.

4.00 Meeting ends.

Once again, all members who are interested or involved in the examination of Roman Pottery are cordially invited to attend.

Accommodation is limited, so apply now for a free admission ticket by writing or telephoning Ted Connell.

Fieldwork Grants

Are you planning an excavation or fieldwork within the county of Kent during 1988? Grants are available from the K.A.S. to assist with work carried out by Affiliated Societies or individual members.

Applications on the appropriate form (obtainable from the Hon. Gen. Sec.) should be made to the Hon. General Secretary by **1ST OCTOBER 1987.**

Roman Brick and Tile, An Analytical Survey and Corpus of Surviving Examples by Gerald Brodribb.

21.9 x 15.7 cm, pp. 224, illustrated. ISBN 0 86299 363 6, cloth, £14.95.

This pioneer survey of Romano-British tile and brick of every kind is the result of researching all possible sources such as museums, sites and archaeological units.

There are thirty different forms of ceramic building material, and a history with classical references prefaces a study of each form. The author shows how they were used and discusses oddities and unique items. Brick and tile constitutes one of the largest categories of material on any site where there has been occupation during the Romano-British period and yet the subject has been sadly neglected in the past. But now a new awareness is arising, and it is hoped that this survey and corpus may be of use to excavators and fieldwalkers, and also act as a stimulus to further work on the subject.

Excursions for 1988

The following excursions and visits are planned for 1988.

- (1) A five-day Continental tour Monday to Friday, 2nd - 6th May, the first week of May 1988, to include Brussels, Ghent, Bruges and Waterloo.
 - (2) Saturday 3rd July: a half-day tour of Wingham. Afternoon only, with tea at Dane Court.
 - (3) Saturday 24th July: an all-day visit to Winchester.
 - (4) Saturday 8th September: a half-day afternoon visit to Tenterden.
- Programmes for these excursions are obtainable by sending a s.a.e. to M.A. Crane, Dane Court, Adisham, Canterbury. Programmes should be requested by March 1st 1988; and bookings should be made by:
- (1) The Continent — December 10th 1987
 - (2) Wingham — April 8th 1988
 - (3) Winchester — April 30th 1988
 - (4) Tenterden — July 1st 1988

M.A. Crane, Hon. Excursions Sec.

LETTERS TO THE EDITOR

Thurrock Armada '88

Dear Sir,

I am writing to your members via your journal to tell them about a forthcoming event which some of them may very well want to become involved in.

As you are no doubt aware 1988 marks the 400th anniversary of the sailing of the Spanish Armada, this together with the current public interest in the Tudor period following the raising of the *Mary Rose*, has encouraged Thurrock Council to celebrate Queen Elizabeth I's review of her army which mustered at Tilbury Fort during the invasion period.

To this end Thurrock Council are planning a very large-scale series of events over the weekend of the 6th and 7th of August 1988 which is the exact anniversary of Elizabeth's visit. Amongst these events are included:-

Tudor Fayres Ox roasts Period banquets
Ale tents Fire eaters, Jugglers, Players etc.

All this is aimed at entertaining an expected crowd of upward of 80,000 people throughout the day and late into the evening. However, the centrepiece of the whole event will be the visit of 'Queen Elizabeth', played by a well-known actress, and of course the massed troops of her army!

As I have some experience in the area I have been charged by Thurrock Council to raise, organise and equip their 'Tudor Army' and this is where your members should be interested.

The Council and their sponsors are prepared to supply the majority of equipment, uniforms, armour, weapons etc. What is needed are the 'stout hearted' men (minimum age of sixteen) to form Elizabeth's army. As a chance to experience what it must have been like for the Tudor soldier, carrying his pike, musket or longbow, in massed formation and at practically no cost, this must rank as a golden opportunity for those interested in 'living' history as well as studying it (should be fun as well!).

It is envisaged that two or three training days will be organised in the months preceding the event to enable the volunteers to be kitted out with uniform and some training in the 16th century and manoeuvre to be given to enable the army to give its best.

All in all this event promises to be the largest of its kind in the country and as mentioned the 'Army' will form the centrepiece of the celebrations.

Do YOU want to be involved? If so, contact me as soon as possible and I will send you further details of what is required. You can contact me at:- 98 Suffolk Rd., Barking, Essex, or on 01-594 9958.

I look forward to hearing from you.

Steven Payne

A.G.M. 1987

The Annual General Meeting was held at Maidstone on the morning of Saturday May 16th.

Officers

The following Officers, duly nominated by Council were elected *nem. con.*

The President	Mr L.R.A. Grove, B.A., F.S.A., F.M.A.
The Hon. Editor	Dr A.P. Detsicas, M.A., D.Litt., F.S.A.
The Hon. Treasurer	Mr A.C. Webster, F.C.A.
The Hon. General Secretary	Mr A.C. Harrison, B.A., F.S.A.
The Hon. Membership Secretary	Mrs M. Lawrence
The Hon. Excursions Secretary	Mr M.A. Crane, B.A.
The Hon. Curator	Mr D.B. Kelly, B.A., F.S.A., A.M.A.
The Hon. Librarian	Dr P.H.G. Draper, B.Sc., Ph.D.

Council

After a ballot, the following were elected:-

Mrs N.V. Caiger, Mr A.J. Daniels, Mr R.F. LeGear, A.A.I.S., Mr A. Miles, Dr J. Thirsk, B.A., Ph.D., and Mrs P. Winzar.

Reports and Accounts

After presenting the Report, which had previously been circulated, the Hon. Secretary stressed the need for members to notify changes in the Member's List. He outlined the system for distributing *Archaeologia Cantiana* which it was proposed to follow this year. He also mentioned the project for an architectural survey of West Malling as being most worthwhile.

In presenting the Accounts, Mr Lyle, M.A., the retiring Treasurer, reported that the Society's financial position had improved during the past year and was satisfactory. Both the Report and Accounts were approved *nem. con.*

On the proposal of Dr Draper, seconded by Mr Hiscock, a vote of thanks to Mr Lyle for his sixteen years of service to the Society was passed by acclamation.

In the afternoon members heard a most interesting talk on recent discoveries in Canterbury by Mr Paul Bennett, B.A., Director of the Canterbury Archaeological Trust, who coped most valiantly after initial difficulties over the projector.

Much interest was shown in the exhibit mounted by the Maidstone Area Archaeological Group, featuring their recent excavations, and in the C.A.T. Bookstall.

Presentation

At the recent Council meeting there was general agreement that members would wish to record their appreciation of Mr Lawrence Lyle's sterling work for the Society over the last sixteen years. Contributions to "The Lawrence Lyle Testimonial Fund" may be sent to the Hon. General Secretary.

Arthur Harrison

The Honorary Editor of the Newsletter welcomes all letters, articles and communications and would particularly like to receive more from members and others, especially on subjects such as requests for research information, finds, books and related topics. Illustrations, if relevant, are always helpful and can assist readers in identifying objects, understanding points and following arguments.

The Editor, however, wishes to draw his readers' attention to the fact that neither the Council of the K.A.S. nor the Editor is answerable for the opinions, attitudes or views which contributors may express in the course of their signed articles. Each author is alone responsible for the contents and substance of their letters, items or papers.

Hon. Editor: Ted Connell.

Published by the Kent Archaeological Society,
The Museum, St. Faith's Street,
Maidstone, Kent ME14 1LH